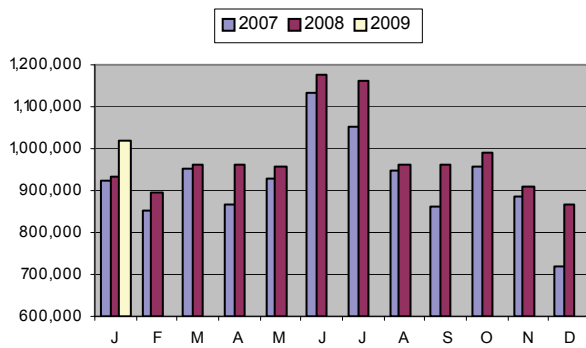


LIBRARIES SEE SIGNIFICANT INCREASES IN USE

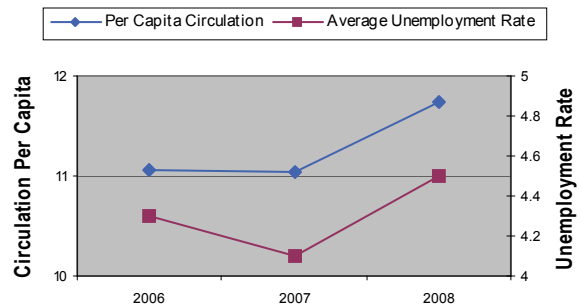
Public libraries in Kansas have seen significant increases in use during 2008. These increases appear to be attributable to the current economic conditions.

A recent survey conducted by the Kansas Library Association and the State Data Center found that library circulation in 2008 increased nearly 6% over the previous year. The most remarkable increases occurred during the fourth quarter, which was up 7.8% and December, which saw a 19.9% increase over the previous year.

Kansas Library Circulation by Month



Library Circulation and Unemployment Rate



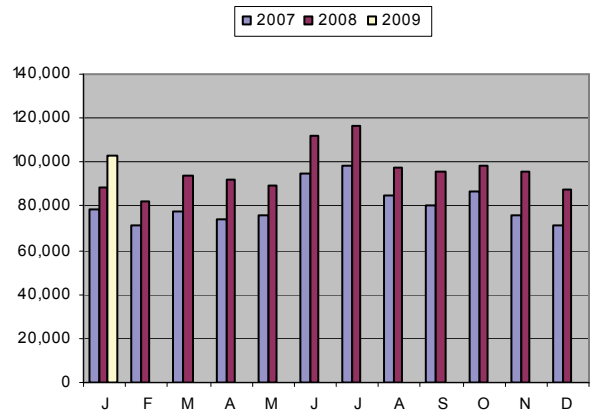
The study noted a significant correlation between per capita circulation and unemployment claims. In other words, as unemployment claims went up, library circulation increased by a similar rate. This finding suggests that, as the economy slows and unemployment increases, people are turning to their public libraries more. Anecdotal evidence from libraries, see “From the Libraries” below, supports this trend of increased public library use by Kansans who have been adversely affected by the economy.

KANSAS CITY KANSAS PUBLIC LIBRARY

The Kansas City Kansas Public Library system saw significant increases in library use between 2007 and 2008. Kansas Citizens visited the library 20.3% more often and checked out 18.6% more items in 2008 than in 2007. January 2009 circulation is up 16% over 2008 and 32% over January 2007.

The results of the survey also indicated a significant correlation between Kansas City’s unemployment rate and the circulation rate at the public library.

KCKPL Monthly Circulation



QUOTES FROM THE LIBRARIES

“[W]e see new people weekly who have to file unemployment online who have never used a computer before. These folks are very sad cases as down to begin with and then feel inadequate because they don’t know how to use a computer. I always mention the tech training classes to them and they are very grateful.”

“We have had at least 2 major companies close ... many of the laid-off workers use our computers in looking for work, compiling resumes and, applying for jobs. They ask for assistance with all of those tasks, as many of them are not skilled in using computers and the Internet.”



Prepared by the State Data Center at the State Library of Kansas.
 For more information, contact Peter Haxton at paxton@kslib.info or 785-296-2008.
 Date of report: February 13, 2009.